

Riser Plate Instructions for Driveway Groomer

Please review completely before installation and use. If there are any questions or comments please contact us through the site or call the number on our site



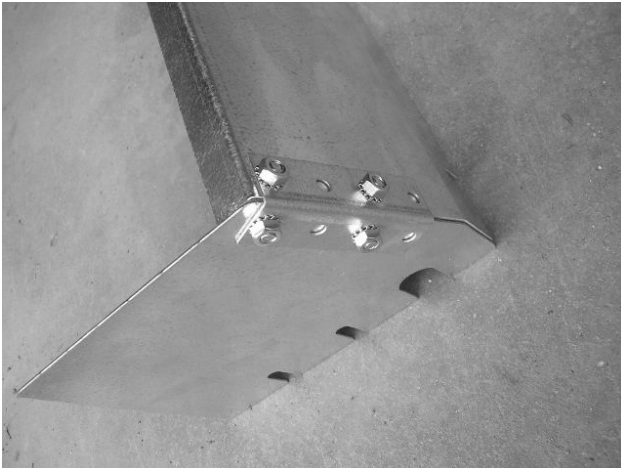
Parts may have burrs or sharp edges.

Use leather gloves to handle parts whenever possible.

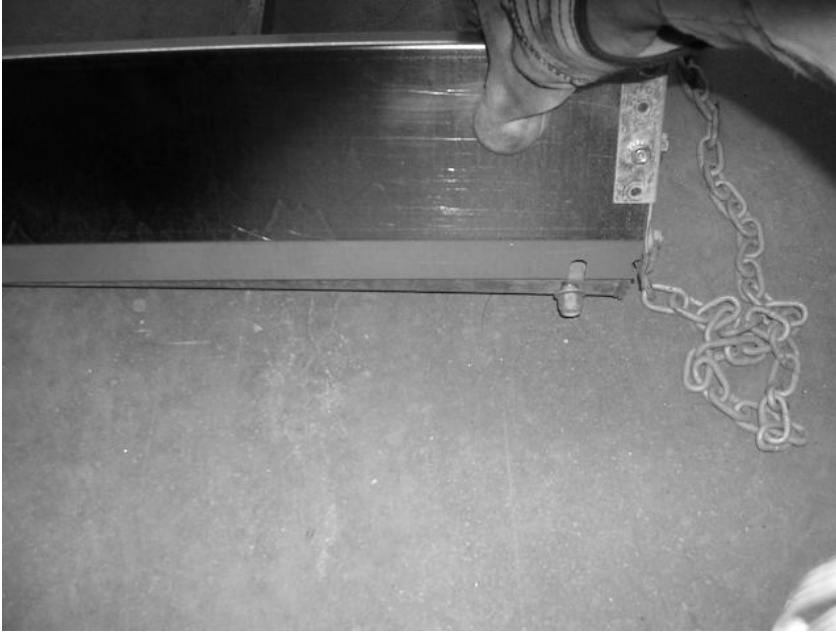
Please refer to drawing and pictures together during assembly.



If plates are being put on an existing Groomer, simply loosen the 2 side bolts on each side and the 5 blade bolts to leave enough space to insert the plate assembly.



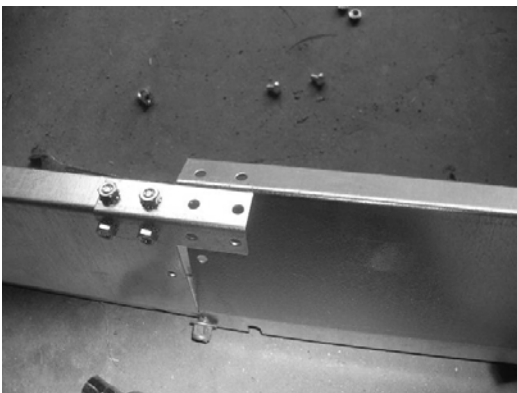
Assemble end plates to long plates with corner brackets and screws and nuts as shown. Hand tighten for now. Be sure to place screws inside and nuts outside.



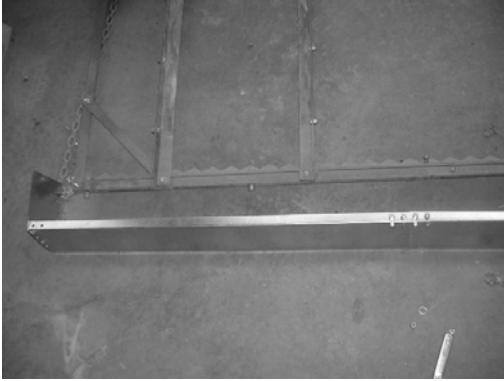
Loosen the 2 side bolts on each side and the 5 blade bolts to get enough clearance to slide the riser plates behind the washers. Start at the middle bolt on the blade and push down on the outer part to seat as shown. Repeat for the other side if desired.



Connect with angle bracket and screws and nuts.



To remove one half of plate, loosen the 3 blade bolts, the 2 side bolts, and four screws and nuts. Push the plates apart a bit as shown to clear the bracket and just lift off from the corner.



To remove entire assembly, remove the center nut and washer and push the bolt flush. Loosen the other 4 blade bolts and side bolts and just pull the assembly off.

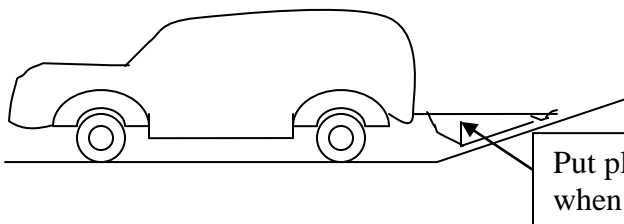
That's it! Now let's talk about use.

In general, the same use guidelines apply as in the main manual. The Groomer works a little differently with the plates on, you can pull and direct more material, and there is an additional caution to be aware of.



The one important Caution!!

If you are going from a flat to a hill, you have to be sure there is enough clearance for the bar over the plates. If not, the plates will get crushed in the middle by the bar. If this is the case, just reverse the plates toward the vehicle so it maintains clearance and push a pile in reverse and smooth in forward. Note below that this situation occurred.



Put plates toward hitch
when clearance is needed!

How it works differently:

With the plates on, smaller material flows under and through the teeth while larger stones are waiting for a depression to call home. There is no flow over the top as the combination of angle on the plates and the build up of material will actually provide a small amount of lift when there are no depressions to drop material into. Of course, traveling in reverse for a short distance will spread the pile nicely. If you want to pull material from the bottom of a hill back up, either lift the front or put both blades forward just like without them, only you will pull more.



For driveways with the bump in the middle and 2 tire ruts this method below is just amazing. When you angle the unit as shown and only use ½ a plate, you can pull the material from the edge while riding on the center and quickly fill the ruts and reproduce the crown!

